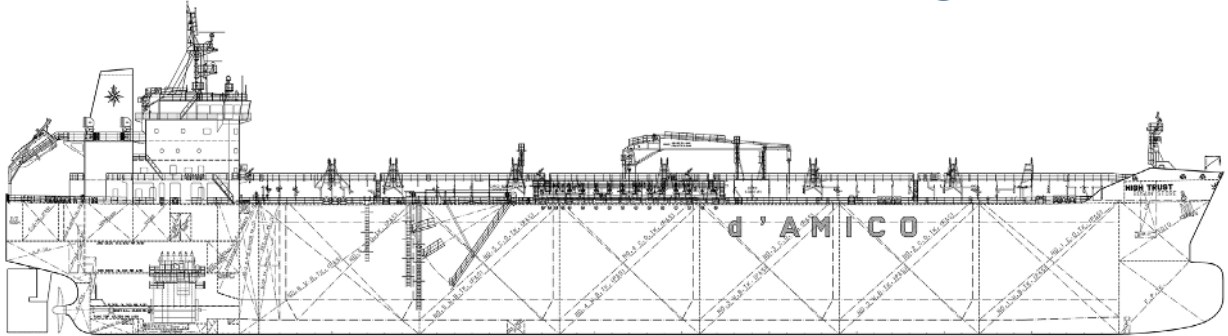


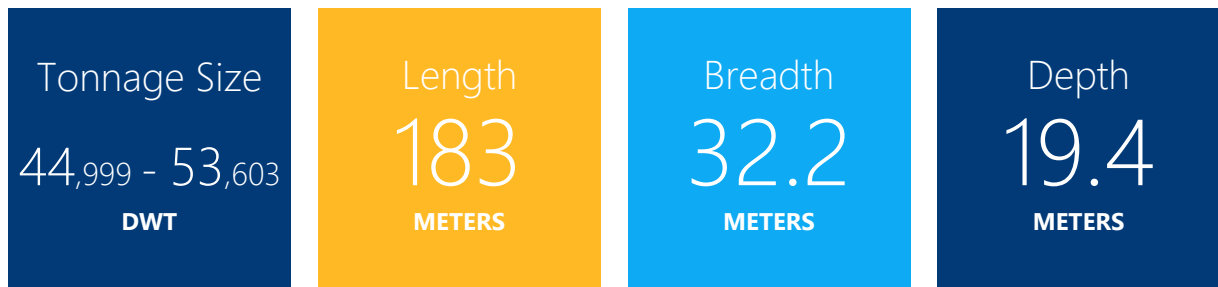


*d'Amico*  
INTERNATIONAL SHIPPING S.A.

# MR / Medium Range



## Vessel Details



## Medium Range Fleet

| Owned Vessel    | Year built | Tonnage size | Builder/Country                      | IMO Classified |
|-----------------|------------|--------------|--------------------------------------|----------------|
| High Challenge  | 2017       | 50,000 DWT   | Hyundai Mipo, South Korea (Vinashin) | IMO II/IMOIII  |
| High Adventurer | 2017       | 50,000 DWT   | Onomichi, Japan                      | IMO II/IMOIII  |
| High Wind       | 2016       | 50,000 DWT   | Hyundai Mipo, South Korea (Vinashin) | IMO II/IMOIII  |
| High Seas       | 2012       | 51,678 DWT   | Hyundai Mipo, South Korea            | IMO II/IMOIII  |
| High Tide       | 2012       | 51,768 DWT   | Hyundai Mipo, South Korea            | IMO II/IMOIII  |
| GLENDIA Melissa | 2011       | 47,203 DWT   | Hyundai Mipo, South Korea            | IMO II/IMOIII  |
| GLENDIA Meryl   | 2011       | 47,251 DWT   | Hyundai Mipo, South Korea            | IMO II/IMOIII  |
| GLENDIA Melody  | 2011       | 47,238 DWT   | Hyundai Mipo, South Korea            | IMO II/IMOIII  |
| GLENDIA Melanie | 2010       | 47,162 DWT   | Hyundai Mipo, South Korea            | IMO II/IMOIII  |



| <b>Bare-Boat with purchase option/obligation</b> | <b>Year built</b> | <b>Tonnage size</b> | <b>Builder/Country</b>               | <b>IMO Classified</b> |
|--|-------------------|---------------------|--------------------------------------|-----------------------|
| High Trust                                       | 2016              | 49,990 DWT          | Hyundai Mipo, South Korea (Vinashin) | IMO II/IMOIII         |
| High Trader                                      | 2015              | 49,990 DWT          | Hyundai Mipo, South Korea (Vinashin) | IMO II/IMOIII         |
| High Loyalty                                     | 2015              | 49,990 DWT          | Hyundai Mipo, South Korea            | IMO II/IMOIII         |
| High Freedom                                     | 2014              | 49,990 DWT          | Hyundai Mipo, South Korea            | IMO II/IMOIII         |
| High Discovery                                   | 2014              | 50,036 DWT          | Hyundai Mipo, South Korea            | IMO II/IMOIII         |
| High Voyager                                     | 2014              | 45,999 DWT          | Hyundai Mipo, South Korea            | IMO II/IMOIII         |
| High Fidelity                                    | 2014              | 49,990 DWT          | Hyundai Mipo, South Korea (Vinashin) | IMO II/IMOIII         |

| <b>TC-IN Long Term with purchase option</b> | <b>Year built</b> | <b>Tonnage size</b> | <b>Builder/Country</b>         | <b>IMO Classified</b> |
|---|-------------------|---------------------|--------------------------------|-----------------------|
| High Leader                                 | 2018              | 50,000 DWT          | Japan Marine United Co., Japan | IMO II/IMOIII         |
| High Navigator                              | 2018              | 50,000 DWT          | Japan Marine United Co., Japan | IMO II/IMOIII         |
| High Explorer                               | 2018              | 50,000 DWT          | Onomichi, Japan                | IMO II/IMOIII         |
| Crimson Jade                                | 2017              | 50,000 DWT          | Minaminippon Shipbuild, Japan  | IMO II/IMOIII         |
| Crimson Pearl                               | 2017              | 50,000 DWT          | Minaminippon Shipbuild, Japan  | IMO II/IMOIII         |

**TC-IN Long Term without purchase option**

|                           |      |            |                                  |               |
|---------------------------|------|------------|----------------------------------|---------------|
| Green Planet              | 2018 | 50,843 DWT | Daesun Shipbuilding, South Korea | IMO II/IMOIII |
| High Prosperity           | 2006 | 48,711 DWT | Imabari, Japan                   | -             |
| High SD Yihe <sup>1</sup> | 2005 | 48,700 DWT | Imabari, Japan                   | -             |

<sup>1</sup> Former High Presence sold by d'Amico Tankers in Feb'18 and taken back in time charter for 6 years