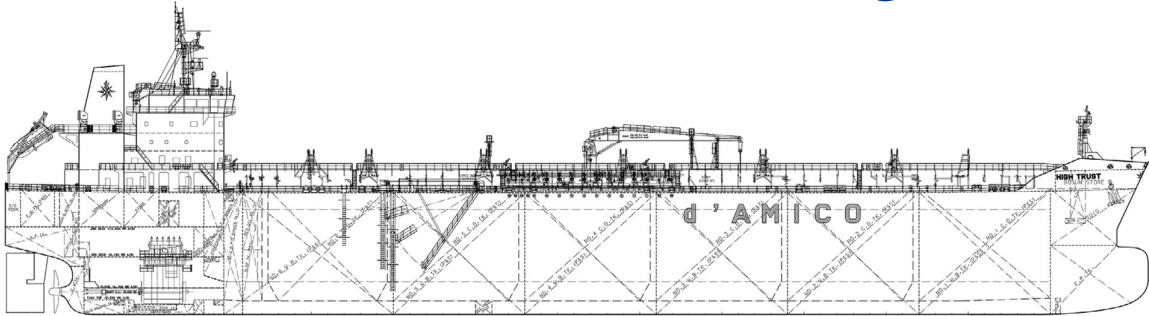
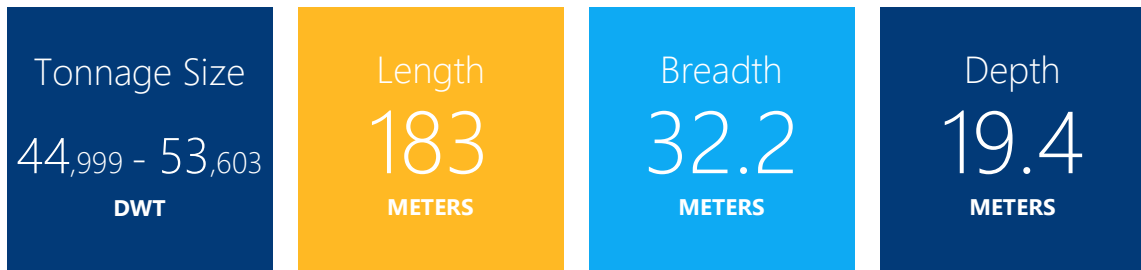




MR / Medium Range



Vessel Details



Medium Range Fleet

Owned Vessel	Year built	Tonnage size	Builder/Country	IMO Classified
High Challenge	2017	50,000 DWT	Hyundai Mipo, South Korea (Vinashin)	IMO II/IMOIII
High Wind	2016	50,000 DWT	Hyundai Mipo, South Korea (Vinashin)	IMO II/IMOIII
High Seas	2012	51,678 DWT	Hyundai Mipo, South Korea	IMO II/IMOIII
High Tide	2012	51,768 DWT	Hyundai Mipo, South Korea	IMO II/IMOIII
GLEND A Melissa ¹	2011	47,203 DWT	Hyundai Mipo, South Korea	IMO II/IMOIII
GLEND A Mery ²	2011	47,251 DWT	Hyundai Mipo, South Korea	IMO II/IMOIII
GLEND A Melody ¹	2011	47,238 DWT	Hyundai Mipo, South Korea	IMO II/IMOIII
GLEND A Melanie ²	2010	47,162 DWT	Hyundai Mipo, South Korea	IMO II/IMOIII
High Venture	2006	51,087 DWT	STX, South Korea	IMO II/IMOIII

¹ Vessel owned by GLEND A International Shipping d.a.c. In which DIS has 50% interest and Time Chartered to d'Amico Tankers d.a.c.

² Vessel owned by GLEND A International Shipping d.a.c. In which DIS has 50% interest



High Progress	2005	51,303 DWT	STX, South Korea	IMO II/IMOIII
High Performance	2005	51,303 DWT	STX, South Korea	IMO II/IMOIII
High Valor	2005	46,975 DWT	STX, South Korea	IMO II/IMOIII
High Courage	2005	46,975 DWT	STX, South Korea	IMO II/IMOIII

Bare-Boat with purchase option/obligation	Year built	Tonnage size	Builder/Country	IMO Classified
High Trust	2016	49,990 DWT	Hyundai Mipo, South Korea (Vinashin)	IMO II/IMOIII
High Trader	2015	49,990 DWT	Hyundai Mipo, South Korea (Vinashin)	IMO II/IMOIII
High Loyalty	2015	49,990 DWT	Hyundai Mipo, South Korea	IMO II/IMOIII
High Freedom	2014	49,990 DWT	Hyundai Mipo, South Korea	IMO II/IMOIII
High Discovery	2014	50,036 DWT	Hyundai Mipo, South Korea	IMO II/IMOIII
High Voyager	2014	45,999 DWT	Hyundai Mipo, South Korea	IMO II/IMOIII
High Fidelity	2014	49,990 DWT	Hyundai Mipo, South Korea (Vinashin)	IMO II/IMOIII
High Priority	2005	46,847 DWT	Nakai Zosen, Japan	

TC-IN Long Term with purchase option	Year built	Tonnage size	Builder/Country	IMO Classified
High Leader	2018	50,000 DWT	Japan Marine United Co., Japan	IMO II/IMOIII
High Navigator	2018	50,000 DWT	Japan Marine United Co., Japan	IMO II/IMOIII
High Explorer	2018	50,000 DWT	Onomichi, Japan	IMO II/IMOIII
High Adventurer	2017	50,000 DWT	Onomichi, Japan	IMO II/IMOIII
Crimson Jade	2017	50,000 DWT	Minaminippon Shipbuild, Japan	IMO II/IMOIII
Crimson Pearl	2017	50,000 DWT	Minaminippon Shipbuild, Japan	IMO II/IMOIII

TC-IN Long Term without purchase option	Year built	Tonnage size	Builder/Country	IMO Classified
High Prosperity	2006	48,711 DWT	Imabari, Japan	-
High SD Yihe ³	2005	48,700 DWT	Imabari, Japan	-

TC-IN Short Term

SW Southport I	2004	46,992 DWT	STX, South Korea	IMO II/IMOIII
SW Tropez	2004	46,992 DWT	STX, South Korea	IMO II/IMOIII

³ Former High Presence sold by d'Amico Tankers in Feb'18 and taken back in time charter for 6 years