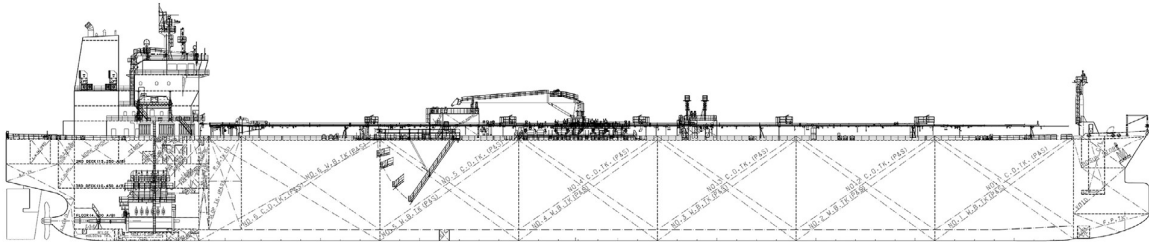
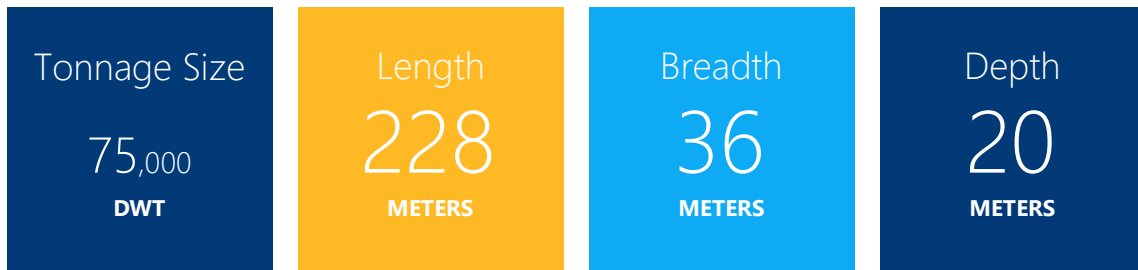




Long Range 1 / LR1



Vessel Details



LR1 Fleet

Owned Vessel	Year built	Tonnage size	Builder/Country	IMO Classified
Cielo di Londra	2019	75,000 DWT	Hyundai Mipo, South Korea (Vinashin)	IMO II/IMOIII
Cielo di Rotterdam	2018	75,000 DWT	Hyundai Mipo, South Korea (Vinashin)	IMO II/IMOIII
Cielo di Cagliari	2018	75,000 DWT	Hyundai Mipo, South Korea (Vinashin)	IMO II/IMOIII
Cielo Rosso	2018	75,000 DWT	Hyundai Mipo, South Korea (Vinashin)	IMO II/IMOIII
Cielo Bianco	2017	75,000 DWT	Hyundai Mipo, South Korea (Vinashin)	IMO II/IMOIII

Bare-Boat - LR1

Cielo di Houston	2019	75,000 DWT	Hyundai Mipo, South Korea (Vinashin)	IMO II/IMOIII
------------------	------	------------	--------------------------------------	---------------