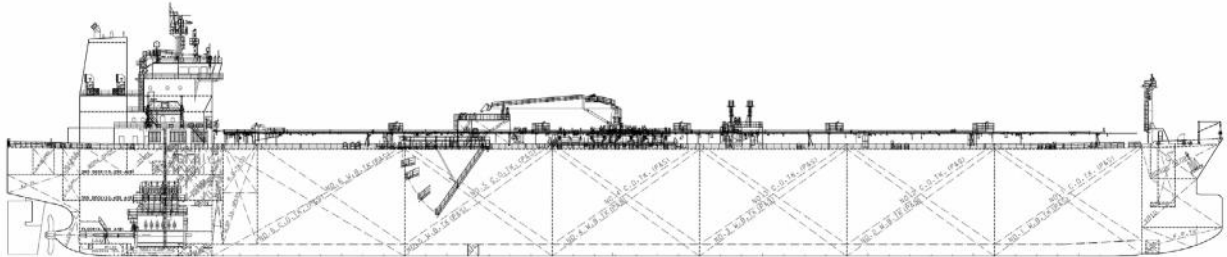




# Long Range 1 / LR1



## Vessel Details

Tonnage Size

75,000

DWT

Length

228

METERS

Breadth

36

METERS

Depth

20

METERS

## LR1 Fleet

Owned Vessel	Year built	Tonnage size	Builder/Country	IMO Classified
Cielo di Rotterdam	2018	75,000 DWT	Hyundai Mipo, South Korea (Vinashin)	IMO II/IMOIII
Cielo di Cagliari	2018	75,000 DWT	Hyundai Mipo, South Korea (Vinashin)	IMO II/IMOIII
Cielo Rosso	2018	75,000 DWT	Hyundai Mipo, South Korea (Vinashin)	IMO II/IMOIII
Cielo Bianco	2017	75,000 DWT	Hyundai Mipo, South Korea (Vinashin)	IMO II/IMOIII

## LR1 New buildings Fleet

Number Hull / Vessel Name	Estimated delivery date	Tonnage size
HN S433 - Tbn	(Q1 2019)	75,000 DWT
HN S434 - Tbn	(Q1 2019)	75,000 DWT