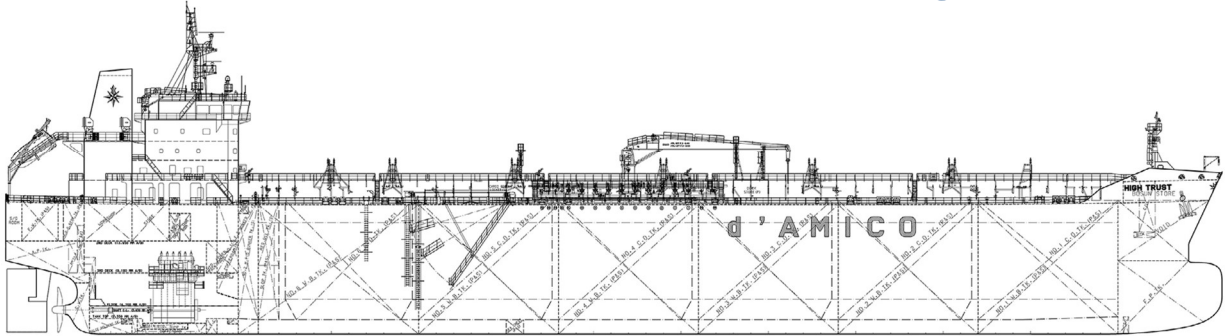




d'Amico
INTERNATIONAL SHIPPING S.A.

MR / Medium Range



Vessel Details

Tonnage Size
44,999 - 53,603
DWT

Length
183
METERS

Breadth
32.2
METERS

Depth
19.4
METERS

Medium Range Fleet

Owned Vessel	Year built	Tonnage size	Builder/Country	IMO Classified
High Challenge	2017	50,000 DWT	Hyundai Mipo, South Korea	IMO II/IMOIII
High Wind	2016	50,000 DWT	Hyundai Mipo, South Korea	IMO II/IMOIII
High Trust	2016	49,990 DWT	Hyundai Mipo, South Korea	IMO II/IMOIII
High Trader	2015	49,990 DWT	Hyundai Mipo, South Korea	IMO II/IMOIII
High Loyalty	2015	49,990 DWT	Hyundai Mipo, South Korea	IMO II/IMOIII
High Voyager	2014	45,999 DWT	Hyundai Mipo, South Korea	IMO II/IMOIII
High Seas	2012	51,678 DWT	Hyundai Mipo, South Korea	IMO II/IMOIII
High Tide	2012	51,768 DWT	Hyundai Mipo, South Korea	IMO II/IMOIII
GLENDIA Melissa ²	2011	47,203 DWT	Hyundai Mipo, South Korea	IMO II/IMOIII

¹ Vessel owned by Eco Tankers d.a.c., a JV Venice Shipping Logistics S.p.A. in which DIS has 33% interest and time chartered to d'Amico Tankers d.a.c.

² Vessel owned by GLENDIA International Shipping d.a.c. in which DIS has 50% interest and Time Chartered to d'Amico Tankers d.a.c.

³ Vessels owned by GLENDIA International Shipping d.a.c. in which DIS has 50% interest

⁴ Vessels owned by DM Shipping d.a.c. in which DIS has 51% interest and Time chartered to d'Amico Tankers d.a.c.

⁵ Former High Endurance sold by d'Amico Tankers in Feb '17 and taken back in time charter for 4 years

⁶ Former High Endeavour sold by d'Amico Tankers in Mar'17 and taken back in time charter for 4 years

⁷ Vessel sold by d'Amico tankers d.a.c. in Oct '17 and taken back in bare-boat charter contract for 5 years

⁸ Former High Presence sold by d'Amico Tankers d.a.c. in Feb '18 and taken back in time charter for 6 years



GLEND A Meryl ³	2011	47,251 DWT	Hyundai Mipo, South Korea	IMO II/IMOIII
GLEND A Melody ²	2011	47,238 DWT	Hyundai Mipo, South Korea	IMO II/IMOIII
GLEND A Melanie ³	2010	47,162 DWT	Hyundai Mipo, South Korea	IMO II/IMOIII
GLEND A Meredith ³	2010	46,147 DWT	Hyundai Mipo, South Korea	IMO II/IMOIII
GLEND A Megan ²	2009	47,147 DWT	Hyundai Mipo, South Korea	IMO II/IMOIII
High Venture	2006	51,087 DWT	STX, South Korea	IMO II/IMOIII
High Progress	2005	51,303 DWT	STX, South Korea	IMO II/IMOIII
High Performance	2005	51,303 DWT	STX, South Korea	IMO II/IMOIII
High Valor	2005	46,975 DWT	STX, South Korea	IMO II/IMOIII
High Courage	2005	46,975 DWT	STX, South Korea	IMO II/IMOIII

Bare-Boat with purchase option/obligation

High Freedom	2014	49,990 DWT	Hyundai Mipo, South Korea	IMO II/IMOIII
High Discovery	2014	50,036 DWT	Hyundai Mipo, South Korea	IMO II/IMOIII
High Fidelity	2014	49,990 DWT	Hyundai Mipo, South Korea (Vinashin)	IMO II/IMOIII
High Priority ⁷	2005	46,847 DWT	Nakai Zosen, Japan	

TC-IN Long Term with purchase option

High Leader	2018	50,000 DWT	Japan Marine United Co, Japan	IMO II/IMOIII
High Navigator	2018	50,000 DWT	Japan Marine United Co, Japan	IMO II/IMOIII
High Explorer	2018	50,000 DWT	Onomichi, Japan	IMO II/IMOIII
High Adventurer	2017	50,000 DWT	Onomichi, Japan	IMO II/IMOIII
Crimson Jade	2017	50,000 DWT	Minaminippon Shipbuild, Japan	IMO II/IMOIII
Crimson Pearl	2017	50,000 DWT	Minaminippon Shipbuild, Japan	IMO II/IMOIII

TC-IN Long Term without purchase option

Carina	2010	47,562 DWT	Iwagi Zosen, Japan	
High Efficiency ⁴	2009	46,547 DWT	Nakai Zosen, Japan	
High Strength ⁴	2009	46,800 DWT	Nakai Zosen, Japan	
Freja Baltic	2008	47,548 DWT	Onomichi, Japan	
High Prosperity	2006	48,711 DWT	Imabari, Japan	
High SD Yihe ⁸	2005	48,700 DWT	Imabari, Japan	
SW Southport ⁵	2004	46,992 DWT	STX, South Korea	IMO II/IMOIII
SW Tropez ⁶	2004	46,992 DWT	STX, South Korea	IMO II/IMOIII

¹ Vessel owned by Eco Tankers d.a.c., a JV Venice Shipping Logistics S.p.A. in which DIS has 33% interest and time chartered to d'Amico Tankers d.a.c.

² Vessel owned by GLEND A International Shipping d.a.c. in which DIS has 50% interest and Time Chartered to d'Amico Tankers d.a.c.

³ Vessels owned by GLEND A International Shipping d.a.c. in which DIS has 50% interest

⁴ Vessels owned by DM Shipping d.a.c. in which DIS has 51% interest and Time chartered to d'Amico Tankers d.a.c.

⁵ Former High Endurance sold by d'Amico Tankers in Feb '17 and taken back in time charter for 4 years

⁶ Former High Endeavour sold by d'Amico Tankers in Mar'17 and taken back in time charter for 4 years

⁷ Vessel sold by d'Amico tankers d.a.c. in Oct '17 and taken back in bare-boat charter contract for 5 years

⁸ Former High Presence sold by d'Amico Tankers d.a.c. in Feb '18 and taken back in time charter for 6 years



d'Amico
INTERNATIONAL SHIPPING S.A.

TC-IN Short Term

High Sun ¹	2010	47,562 DWT	Hyundai Mipo, South Korea (Vinashin)	IMO II/IMOIII
High Enterprise	2009	45,800 DWT	Shin Kurushima, Japan	
High Force	2009	53,603 DWT	Shin Kurushima, Japan	
Silver Express	2009	44,935 DWT	Onomichi, Japan	
High Pearl	2009	48,023 DWT	Imabari, Japan	
High Current	2009	46,590 DWT	Nakai Zosen, Japan	
High Beam	2009	46,646 DWT	Nakai Zosen, Japan	
Freja Hafnia	2006	53,700 DWT	Shin Kurushima, Japan	
High Glow	2006	46,846 DWT	Nakai Zosen, Japan	
Citrus Express	2006	53,688 DWT	Shin Kurushima, Japan	
High Power	2004	46,874 DWT	Nakai Zosen, Japan	

¹ Vessel owned by Eco Tankers d.a.c., a JV Venice Shipping Logistics S.p.A. in which DIS has 33% interest and time chartered to d'Amico Tankers d.a.c.

² Vessel owned by GLENDA International Shipping d.a.c. in which DIS has 50% interest and Time Chartered to d'Amico Tankers d.a.c.

³ Vessels owned by GLENDA International Shipping d.a.c. in which DIS has 50% interest

⁴ Vessels owned by DM Shipping d.a.c. in which DIS has 51% interest and Time chartered to d'Amico Tankers d.a.c.

⁵ Former High Endurance sold by d'Amico Tankers in Feb '17 and taken back in time charter for 4 years

⁶ Former High Endeavour sold by d'Amico Tankers in Mar'17 and taken back in time charter for 4 years

⁷ Vessel sold by d'Amico tankers d.a.c. in Oct '17 and taken back in bare-boat charter contract for 5 years

⁸ Former High Presence sold by d'Amico Tankers d.a.c. in Feb '18 and taken back in time charter for 6 years