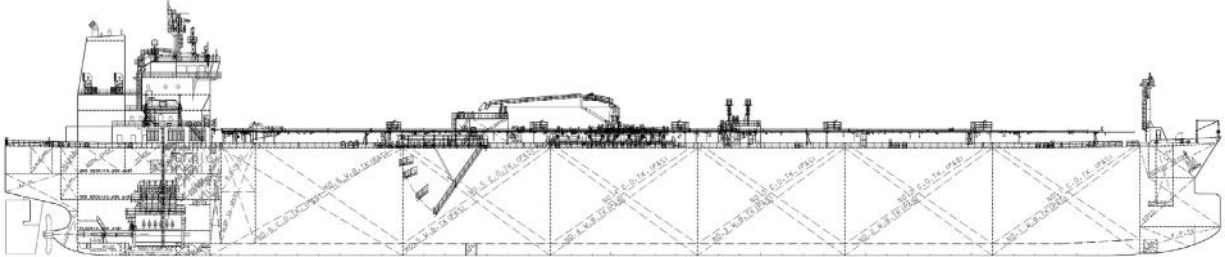
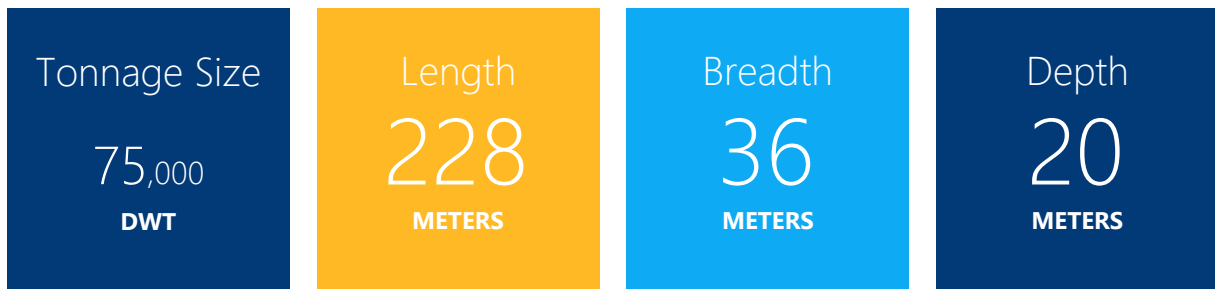




Long Range 1 / LR1



Vessel Details



LR1 Fleet

Owned Vessel	Year built	Tonnage size	Builder/Country	IMO Classified
Cielo di Rotterdam	2018	75,000 DWT	Hyundai Mipo, South Korea (Vinashin)	IMO II/IMOIII
Cielo Bianco	2017	75,000 DWT	Hyundai Mipo, South Korea (Vinashin)	IMO II/IMOIII

LR1 New buildings Fleet

Number Hull / Vessel Name	Estimated delivery date	Tonnage size
HN S430 - Tbn	(Q3 2018)	75,000 DWT
HN S432 - Tbn	(Q3 2018)	75,000 DWT
HN S433 - Tbn	(Q1 2019)	75,000 DWT
HN S434 - Tbn	(Q1 2019)	75,000 DWT